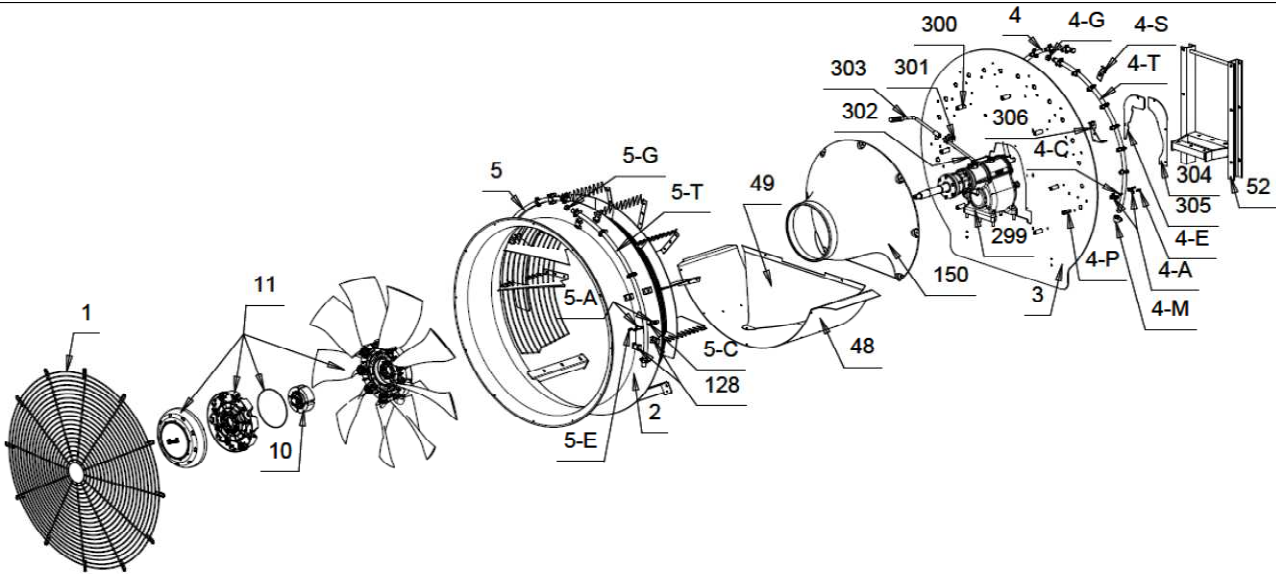


Series: F1060H

Code: D.1060-1060FH00011



Ref.	Codice-Code	Qty.	D.1060-1060FH00011-ZINCATO	D.1060-1060FH00011-GALVANISED
1	RET00000354	1	RETE VNF1060 VERN. NERA	BLACK GUARD VNF1060
	<b>BULLONI0002</b>	<b>1</b>	<b>BULLONI X RETE ZN</b>	<b>BOLTS FOR GUARD</b>
2	CNV00000162	1	VNF1060/02 CONVOGLIATORE COMPLETO ZN	GALVANIZED FAN HOUSING VNF1060/02
3	PIA00000562	1	PIASTRA PT/200/G D.1320 ZN	GALVANIZED BACKPLATE D.1320mm
	<b>BULLONI0233</b>	<b>1</b>	<b>BULLONI BLOCCA CONVOGLIATORE SU PIASTRA</b>	<b>BOLTS TO LOCK THE FAN HOUSING ON THE BACKPLATE</b>
	TER00000021	24	TER80 8x16 ZN	TER80 8x16 GALV.
	TER00000022	4	TER80 8x20 ZN	TER80 8x20 GALV
	AUT00000005	28	AUTOBLOCCANTE 8MA ALTO	LOCKNUT 8MA
52	CAV00000066	1	VNF1060/01 CAVALLETTO VERNICIATO	BLACK FRAME VNF1060/02
	<b>BULLONI0040</b>	<b>1</b>	<b>BULLONI X CAVALLETTO</b>	<b>BOLTS FOR FRAME</b>
48	BAN00000216	1	VNF1060/16 BANDELLA DRITTA ZN	GALVANIZED STRAIGHT DEFLECTOR VNF1060/16
49	BAN00000217	1	VNF1060/20 BANDELLA CENTRALE ZN.	GALVANIZED CENTRAL DEFLECTOR VNF1060/20
	<b>BULLONI0235</b>	<b>1</b>	<b>BULLONI BLOCCA BANDELLE VNF1060</b>	<b>BOLTS TO LOCK THE DEFLECTOR</b>
	TER00000018	6	TER80 6x20 ZN	GALV. TER80 6x20
	AUT00000004	6	AUTOBLOCCANTE 6MA ZN	GALV. LOCKNUT 6MA
	RON0000104	6	RONDELLA 6x18 ZN	GALV. WASHER 6x18
	TER00000021	1	TER80 8x16 ZN	GALV. TER80 8x16
	AUT00000005	1	AUTOBLOCCANTE 8MA ZN	GALV. LOCKNUT 8MA
150	CON00000031	1	CON/1060 -CONO	CON/1060 CONE
	<b>BULLONI0232</b>	<b>1</b>	<b>BULLONI X CONO</b>	<b>BOLTS FOR CONE</b>
300	DIS00000129	7	DISTANZIERE VNF1060 H50 NERO	BLACK H.50 SPACER
	TER00000055	7	TER80 8X80 ZN	GALV. TER80 8x80
	RON00000350	7	RONDELLA NYLON 8x24x3	NYLON WASHER 8x24x3
	RON00000148	14	RONDELLA 8x22 ZN	GALV. WASHER 8x22
	AUT00000005	7	AUTOBLOCCANTE 8MA ALTO	LOCKNUT 8MA
304	PIA00000213	1	CONTROPIASTRA VNF1060/51 DX ZN	GALV. RIGHT PLATE VNF1060/51
305	PIA00000214	1	CONTROPIASTRA VNF1060/61 SX ZN	GALV. LEFT PLATE VNF1060/61
	TCC00000028	5	TCCE 6x10 ZN PER CONTROPIASTRE	GALV. TCCE 6x10 FOR PLATES
4	<b>TUB0000087DX</b>	<b>1</b>	<b>TUBO INOX COMPLETO 8M. DX</b>	<b>SS COMPL. MANIFOLD 8 CLAMPS RIGHT</b>
4	<b>TUB0000087SX</b>	<b>1</b>	<b>TUBO INOX COMPLETO 8M. SX</b>	<b>SS COMPL. MANIFOLD 8 CLAMPS LEFT</b>
4G	TAP00000001	1	TAPPO 1/2 GAS F.	1/2 GAS F. CUP
4M	CUR00000001	1	CURVA 1/2 - 1/2 GAS	1/2 - 1/2 GAS ELBOW
4P	PRO00000023	8	PROLUNGA M-F CILINDRICA 1/4" H43	CYLINDRIC EXTENSION 1/4 H.43
4T	TUB000189DX	1	TUBO INOX 8FORI DX mm	SS PIPES 8 HOLES RIGHT
4T	TUB000189SX	1	TUBO INOX 8FORI SX mm	SS PIPES 8 HOLES LEFT
	<b>MOR00000003</b>	<b>8</b>	<b>MORSETTO COMPLETO</b>	<b>COMPLETE CLAMP</b>
4A	MOR00000001	8	MORSETTO 1/4 F GAS	1/4F GAS CLAMP
4C	OR000000014	8	OR 3030 VITON	OR3030 VITON
4E	TCC00000119	16	TCCE 6x14 INOX	6x14 BOLT SS
	<b>BULLONI0063</b>	<b>1</b>	<b>BULLONI X TUBI</b>	<b>BOLTS FOR MANIFOLDS</b>
	STA00000001	6	STAFFE ZINCATE PER TUBI	GALVANISED STIRRUPS FOR PIPES
	TER00000009	6	TER80 10x25 ZN	TER80 10x25 GALV.
	AUT00000001	6	AUTOBLOCCANTE 10MA ALTO	10MA LOCKNUT
5	<b>TUB0000088DX</b>	<b>1</b>	<b>TUBO INOX COMPLETO 5M. DX</b>	<b>SS COMPL. MANIFOLD 5 CLAMPS RIGHT</b>
5	<b>TUB0000088SX</b>	<b>1</b>	<b>TUBO INOX COMPLETO 5M. SX</b>	<b>SS COMPL. MANIFOLD 5 CLAMPS LEFT</b>
5G	TAP00000001	1	TAPPO 1/2 GAS F.	1/2 GAS F. CUP
5T	TUB000190DX	1	TUBO INOX 5FORI DX	SS PIPES 5 HOLES RIGHT
5T	TUB000190SX	1	TUBO INOX 5FORI SX	SS PIPES 5 HOLES LEFT
	<b>MOR00000003</b>	<b>5</b>	<b>MORSETTO COMPLETO</b>	<b>COMPLETE CLAMP</b>
5A	MOR00000001	5	MORSETTO 1/4 F GAS	1/4F GAS CLAMP
5C	OR000000014	5	OR 3030 VITON	OR3030 VITON
5E	TCC00000119	10	TCCE 6X14 INOX	6X14 BOLT
128	<b>BULLONI0064</b>	<b>1</b>	<b>KIT COLLARE BLU TUBI SU CNV</b>	<b>KIT BLU CLAMP WITH BOLTS</b>
	COL00000001	6	COLLARE X TUBI	GREEN CLAMP FOR PIPES
	TCC00000008	6	TCCE 6x35 ZN	GALV. TCCE 6x35
	TCC00000009	6	TCCE 6x40 ZN	GALV. TCCE 6x40
	RON00000104	12	RONDELLA 6x18 ZN	GALV. WASHER 6x18
	AUT00000004	12	AUTOBLOCCANTE 6MA ZN	LOCKNUT 6MA
10-11	VNFH1060002	1	VENTOLA COMPLETA VNFH1060 CON FRIZIONE	FAN VNFH1060 COMPLETE OF CLUTCH
	<b>MOLCM150060</b>	<b>1</b>	<b>CAMBIO COMPLETO CM15</b>	<b>COMPLETE GEARBOX CM15</b>
299	MOLZZ000060	1	MOLTIPLICATORE CM15 SENZA LEVA	CM15 GEARBOX WITHOUT LEVER
302	KIT00000126	1	KIT LEVA DRITTA COMPLETA	KIT STRAIGH LEVER
303	KITFIT00110	1	KIT LEVA MOBILE COMPLETA	KIT MOBILE LEVER
306	KIT00000128	1	KIT STAFFA PORTA LEVA MOBILE	KIT BRACKET MOBILE LEVER

Data/Date: 14/04/2017 - Aggiornato il / Update on: 06/12/2019

I dati ed i codici riportati nel seguente documento non sono impegnativi la Fieni Giovanni s.r.l. si riserva di apportare modifiche senza preavviso

Fieni Giovanni s.r.l. - Via Chiavicone,10 - 40051 Altedo (BO) Italy - Tel.: +39 051 871004 - Email: info@fieni.it - www.fieni.it