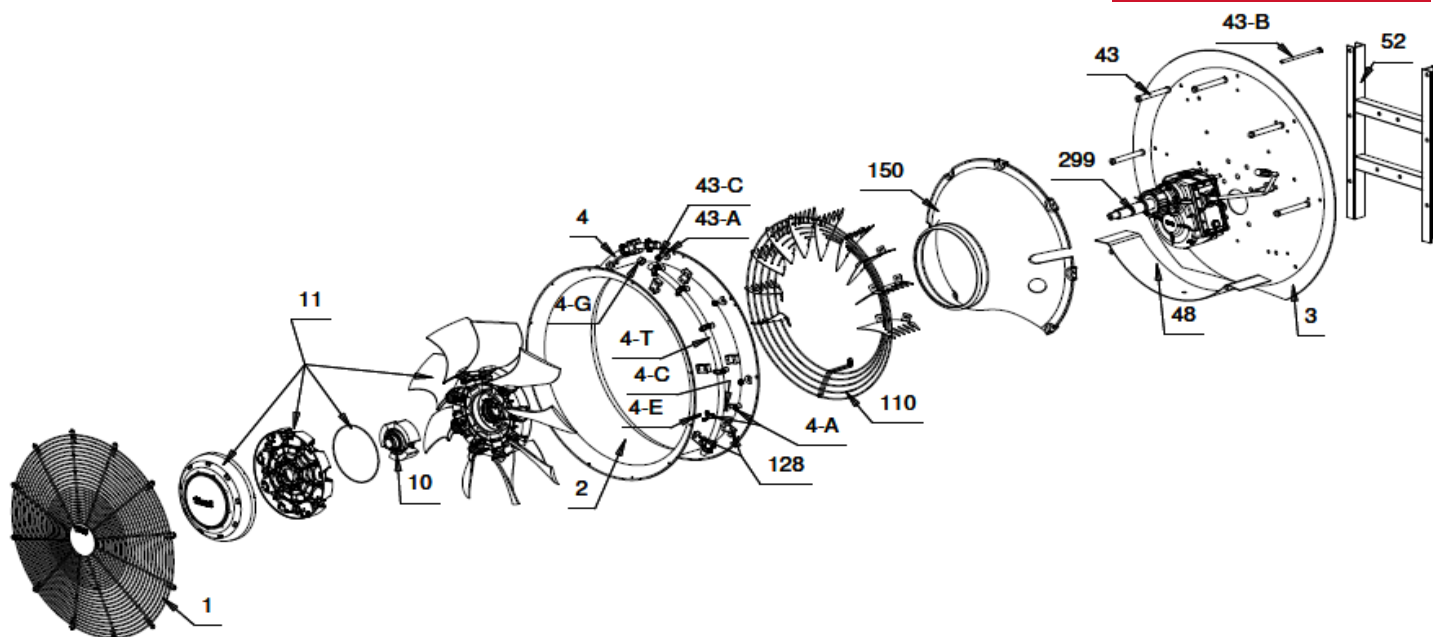


Series: **VNS**

Code: **D.712 - 35VNS000001**



| Ref.         | Codice-code         | Qty.     | D.712-35VNS000001                      | D.712-35VNS000001                         |
|--------------|---------------------|----------|--|---|
| 1            | RET00000005         | 1        | RETE D. 720 ZINCATA                    | D.720 GALV.FAN GUARD                      |
| 2            | CNV00000014         | 1        | CONVOGLIATORE VNS D.720 H.310 ZN       | VNS D.720 H.310 FAN HOUSING -GALV.        |
| 3            | PIA00000441         | 1        | PIASTRA PT/177/A Bombata               | PT/177/A GALV. SHAPED BACKPLATE           |
| 48           | DVT00000051         | 1        | DEVIATORE H.150 VNS 712 ZN             | BOTTOM DEFLECTOR H.150 VNS 712 GALV.      |
| 52           | CAV00000042         | 1        | CAVALLETTO VERNICIATO CM12             | CM12 BLACK PAINTED FRAME                  |
| 110          | RET00000148         | 1        | RT/27 EXPORT VNS 712 PAL.              | RT/27 712 VNS SAFETY GUARD                |
| 150          | CON00000029         | 1        | CON/80 CONO VNS 712 COMP               | CON/80 VNS 712 CONE                       |
|              | <b>BULLONI0023</b>  | <b>1</b> | <b>KIT BULLONI H.150 5 DIST. SAG.</b>  | <b>KIT BOLTS H.150mm 5 SHAPED SPACERS</b> |
| 43           | DIS00000007         | 5        | DISTANZIERE SAGOMATO H.150             | H.150 SHAPED SPACER                       |
|              | RON00000114         | 2        | RONDELLA 10X21                         | 10X21 GALV. WASHER                        |
|              | AUT00000001         | 7        | AUTOBLOCCANTE 10 MA                    | LOCKNUT 10MA                              |
| 43B          | TER00000006         | 7        | TE R80 10X180 ZN                       | TE R80 GALVANISED 10X180 BOLT             |
|              | RON00000118         | 5        | RONDELLA SAGOMATA                      | SHAPED RING                               |
| 4            | <b>TUB0000041DX</b> | <b>1</b> | <b>TUBO INOX COMPLETO 6M.DX</b>        | <b>SS COMPL. MANIFOLD 6 CLAMPS RIGHT</b>  |
| 4            | <b>TUB0000041SX</b> | <b>1</b> | <b>TUBO INOX COMPLETO 6M.SX</b>        | <b>SS COMPL. MANIFOLD 6 CLAMPS LEFT</b>   |
| 4G           | TAP00000001         | 1        | TAPPO 1/2 GAS F.                       | 1/2 F. GAS CAP                            |
| 4M           | CUR00000001         | 1        | CURVA 1/2 - 1/2 GAS                    | 1/2 - 1/2 GAS ELBOW                       |
| 4T           | TUB0000045DX        | 1        | TUBO INOX 6FORI DX - 810mm             | SS PIPE 6 HOLES 810mm RIGHT               |
| 4T           | TUB0000045SX        | 1        | TUBO INOX 6FORI SX - 810mm             | SS PIPE 6 HOLES 810mm LEFT                |
|              | <b>MOR00000003</b>  | <b>6</b> | <b>MORSETTO COMPLETO</b>               | <b>COMPLETE CLAMP</b>                     |
| 4A           | MOR00000001         | 6        | MORSETTO 1/4 F GAS                     | 1/4 F. GAS CLAMP                          |
| 4C           | OR00000014          | 6        | OR 3030 VITON                          | 3030 VITON "O" RING                       |
| 4E           | TCC00000119         | 12       | TCCE 6x14 INOX                         | SS 6x14 BOLT                              |
|              | <b>BULLONI0064</b>  | <b>1</b> | <b>BULLONI X TUBI</b>                  | <b>BOLTS FOR MANIFOLDS</b>                |
|              | TCC00000009         | 6        | TCCE 6x40 ZN                           | GALV. BOLTS TCCE 6x40                     |
|              | TCC00000008         | 6        | TCCE 6x35 ZN                           | GALV. BOLTS TCCE 6x35                     |
| 128          | COL00000001         | 6        | COLLARE BLU                            | CLAMPS D.22 FOR PIPES                     |
|              | RON00000104         | 12       | RONDELLA 6x18 ZN                       | GALV. WASHER 6x18                         |
|              | AUT00000004         | 12       | AUTOBLOCCANTE 6 MA ZN                  | LOCKNUT 6 MA                              |
| <b>10-11</b> | <b>VNS71200002</b>  | <b>1</b> | <b>VENTOLA 712VNS CG con FRIZIONE</b>  | <b>712VNS CG FAN WITH CLUTCH</b>          |
| <b>299</b>   | <b>MOLCM12VNS87</b> | <b>1</b> | <b>MOLTIPLICATORE CM12VNS CON LEVA</b> | <b>CM12VNS GEARBOX WITH LEVER</b>         |
|              | MOLZZ000087         | 1        | MOLTIPLICATORE SENZA LEVA CM12VNS      | CM12VNS GEARBOX - WITHOUT LEVER           |
|              | KIT00000123         | 1        | KIT LEVA COMPLETA - CM12               | KIT- CM12 COMPLETE LEVER                  |

Data/Date: 09/05/2016 - Aggiornato il /Update on: 29/04/2020

I dati ed i codici riportati nel seguente documento non sono impegnativi la Fieni Giovanni s.r.l. si riserva di apportare modifiche senza preavviso

Fieni Giovanni s.r.l. - Via Chiavicone,10 - 40051 Altedo (BO) Italy - Tel.: +39 051 871004 - Email: info@fieni.it - www.fieni.it